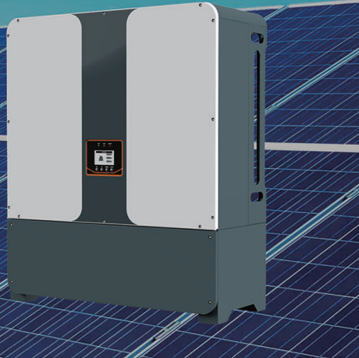


30-60kW Hybrid Inverter

Suitable for industrial energy storage system, on/off-grid seamless switching, stable operation

- Easy Installation
- Ultra-silent
- IP54 protection



PV & Storage system

Integrated PV and storage system model, supporting various kinds of batteries, and integrates EMS smart energy management system;

Smart switching

Modular design, supporting multiple parallel connections, expandable power and capacity;

Wide voltage input range

Wide PV voltage input range 180V-1000V, wide batteries voltage range 220V-800V;

Safe and reliable

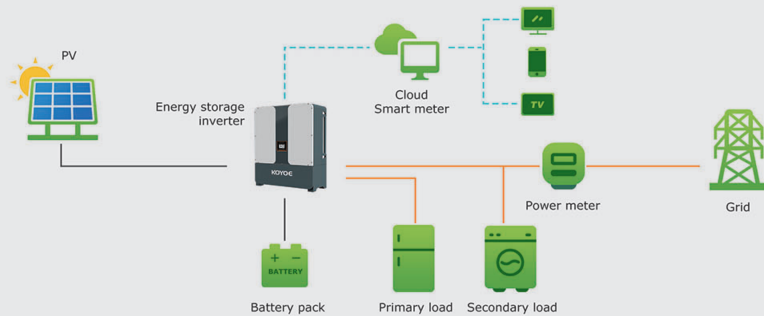
IP54 protection, all-aluminum design, built-in anti-lightning protection, high precision leakage protection;

Smart and simple

Ultra silent, flexible communications, support remote/local USB upgrade;

Efficient power generation

High-current instantaneous charge-discharge switching to improve power generation efficiency.



Model		Y-EST30KH	Y-EST40KH	Y-EST50KH	Y-EST60KH
PV input parameters	Maximum input power (W)	36000	48000	60000	72000
	Maximum input voltage (d.c.V)	1000	1000	1000	1000
	MPPT operating voltage range (d.c.V)	180-900/630	180-900/630	180-900/630	180-900/630
	MPPT operating voltage range at rated power (d.c.V)	300-900	400-900	400-900	450-900
	Starting voltage (d.c.V)	180	180	180	180
	Maximum input current (d.c.A)	36/36/36	36/36/36	36/36/36/36	36/36/36/36
	Maximum short circuit current (d.c.A)	42/42/42	42/42/42	42/42/42/42	42/42/42/42
	Number of MPPT channels and strings	2/2/2	2/2/2	2/2/2/2	2/2/2/2
Grid-connected parameters (AC)	Rated power (W)	30000	40000	50000	60000
	Maximum apparent power (VA)	30000	40000	50000	60000
	Rated Voltage(Vac)	400,3L/N/PE	400,3L/N/PE	400,3L/N/PE	400,3L/N/PE
	Rated frequency(Hz)	50/60	50/60	50/60	50/60
	Maximum current (a.c.A)	45	60	75	87
	Power factor range	0.8 ind...0.8 cap	0.8 ind...0.8 cap	0.8 ind...0.8 cap	0.8 ind...0.8 cap
	Current THD(@rated power)	<3%	<3%	<3%	<3%
Battery Port	Maximum input/output voltage (d.c.V)	800	800	800	800
	Operating voltage range (d.c.V)	220-800	220-800	220-800	220-800
	Maximum charge/discharge current (d.c.A)	100/100	100/100	100/100	100/100
	Maximum input/output power (W)	30000	40000	50000	60000
	Battery type	Lithium battery/lead-acid battery			
Off-grid parameters (Backup AC output)	Rated voltage (a.c.V)	400,3L/N/PE	400,3L/N/PE	400,3L/N/PE	400,3L/N/PE
	Rated frequency(Hz)	50/60	50/60	50/60	50/60
	Rated output current (a.c.A)	45	60	75	87
	Rated output power (W)	30000	40000	50000	60000
	Maximum apparent output power (W)	30000	40000	50000	60000
	Maximum single-phase apparent output power (VA)	10000	13000	17000	20000
Efficiency	On/off-grid switching time	<10ms	<10ms	<10ms	<10ms
	Maximum efficiency	>98.2%	>98.2%	>98.2%	>98.4%
Protection parameters	AC overcurrent protection	Yes	Yes	Yes	Yes
	Ground fault detection protection	Yes	Yes	Yes	Yes
	Power grid monitoring protection	Yes	Yes	Yes	Yes
	Residual current detection protection	Yes	Yes	Yes	Yes
Basic parameters	Dimensions (W/H/D)	800*600*280mm			
	Weight(Kg)	50			
	Operating temperature range (°C)	-25°C ... +60°C (>+45°C derating)			
	Noise (dB)	<=40dB(A)			
	Working altitude (m)	<=4000m(>2000m derating)			
	Static loss	<1W			
	Topology	Transformerless			
	Cooling method	Integrated fan			
	Ingress protection rating	IP54			
	Relative humidity	5-90%			
	DC interface type	Push-in terminal			
	AC interface type	Terminal block			
	Display	LCD			
	Communication method	RS485 (WIFI/GPRS optional)			
Installation method	wall-mounted/floor-standing				